

2020

ZOOLOGY

M.Sc. 1<sup>st</sup> Semester

**Paper- ZOO-195**

**Practical**

*Full Marks: 50*

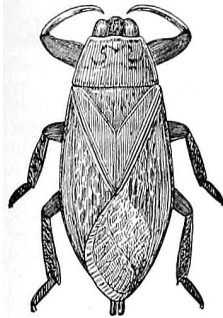
*Time: 2 hour*

The figures in the right-hand margin indicate marks

Candidates are required to give their answers in their own words as far as practicable

Answer the following questions:

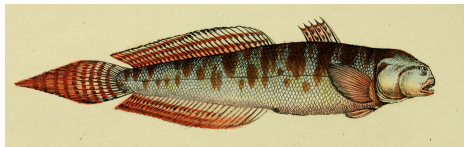
1. Draw and label of reproductive system of *Achatina* sp. 10
2. Draw and label of 5<sup>th</sup> and 7<sup>th</sup> cranial nerves of Rohu fish. 10
3. Identify the following specimen with suitable characters. 2.5 X 4 = 10



a.



b.



c.



d.

4. Write the procedure of gut movement in rat under hypoxia using dale's apparatus and what are the utility of it. 10
5. Make a graph, for the impact of pH on zooplankton by following data. 10

Zooplankton	Survivability of zooplankton				
	0 hr.	1 hr.	3 hr.	12 hr.	24 hr.
Control	10	10	10	10	10
NaCl (pH=7.2)	9	8	7	7	7
Detergent (pH= 8.9)	5	3	2	1	0
K <sub>2</sub> Cr <sub>2</sub> O <sub>7</sub> (pH= 5.6)	4	2	0	0	0